

Building Wind & Water Learning Center

Orange Beach, Alabama

Thank you in advance for taking the time to read this information.

We have worked hard through the years to ensure that each child that participates in Sail Camp comes away with a good experience. I like to believe that we are building much more than sailors. We are helping to mold young lives.

As we move toward the ten year mark of holding sailing camps we face new challenges and new opportunities. Our volunteers, staff, parents, grandparents and sailors are excited about the possibility of having a 'home' for our program. Their enthusiasm is what has kept Sail Camp 'alive' all these years and has now led us to this point. We are surrounded by water and having a teaching facility that offers residents and visitors an opportunity such as this is a win-win for all of us.

Please consider how you can be a part.



Jeanne T. Fitzgibbons

Office Manager, Orange Beach Parks & Recreation

Sail Camp Coordinator

251-981-1524

jfitz@cityoforangebeach.com

Sail Camp was featured on the cover of the October 2011 Alabama Municipal Journal.

Over the years, many articles have been written about our Sail Camp program.

This program is unique in that sailing training is not typically offered by municipal organizations. The camps are attended by residents & property owners children and also visitors to our area. Many vacation dates are planned around when visitors can get their children into a camp.



History of Sail Camp in Orange Beach

Sail Camp has been a very successful program under Parks & Recreation since 2004. The program was originally begun by the Point Yacht Club in the mid 1990's and grew to be so popular that the club could no longer put it on as they did not have the man power.

In 2004, the City purchased the equipment to do the program and hired part time staff to teach. That first year 98 children took part. For 2005 the program was expanded to include morning and afternoon sessions and 154 children took advantage of the opportunity over eight weeks. For 2006 & 2007 the number remained at 160 children and 14 adults (the maximum that could be safely accommodated). In 2007, due to the popularity of the program, the City's budget reflected funds to build a permanent storage facility but the downturn in the economy put those plans on hold. In 2008 the program hosted 144 children and 8 adults over 7 weeks. In 2009, the program was shortened to six weeks and only 8 children per session because Parks & Recreation staff was cut and also the unknown of how the economy would affect the program. All classes were full with a total of 94 participating. In 2010 the oil spill halted the camps right at the beginning of the 1st week. Prior to shutting down, every camp session was full and a waiting list had been started. 2011 saw the program get back underway with renewed interest. 95 youth sailors and 6 junior counselors participated.

Sail Camp remains a popular sought after program. The challenge that it has always faced is having a permanent facility to store equipment and a quiet beach area to teach from. Waterfront Park has been a wonderful site but as usage of the park has increased and with plans that the Art Center has for expansion, the need to find another location has become it's #1 priority.



Plans for the Future -

As the 2011 program was closing down, another city owned site began to be considered. A proposal was put before the City Council to allow waterfront property behind the Library to be improved with the goal of building a facility to house Sail Camp and other future water learning programs. The Council considered the proposal and gave their blessing to proceed with the plans and let staff and volunteers seek donations and sponsorships to help fund the building.

The plan is to build a 25' X 35' building that is basically a storage facility but could also serve as a classroom and weather protection during the weeks of camp. The facility will have a restroom and basic services like water and power. The facility will be accessed by a gravel 'trail' leading down from the parking area located next to the Library. (Work was completed on the parking lot & trail earlier in the year). The design includes a small office, in preparation for future programs.

We have determined that this project can be accomplished at it's 'most accessible' level by spending less than \$50,000.00. Included in the amount is all site work, clearing, waterlines, power, piping to cross ditches, gravel & filter fabric for trail to building and materials to build an 875 sq. ft. building. All work is being accomplished by Public Works staff, thus saving costs.

The structure will be modeled after the restroom building & pavilion on the Back Country Trail. Ventilation will be accomplished through vents in the roof. Fans will be installed to move air when building is being used as classrooms. Large barn style doors can be left open for air movement. The ceiling beams will be strong enough to lift the boats off the floor for more floor room when not in use for camp program.

Site work was completed in late spring and Sail Camp 2012 is currently being held on the new property. After camps are completed in late summer, we hope to begin construction on the new Wind & Water Learning Center building and begin extended programming in 2013. Once the building is completed and Sail Camp has moved in, there is nothing standing in our way to consider how the property can be better utilized. We see possibly holding water safety classes, more adult classes, paddleboard classes, kayak lessons, etc. Weekend and holiday programs are also a possibility.

The most important aspect of this project is funding! We need to secure donors who can help us realize our dream of permanent housing for water related programs, most specifically Sail Camp. Any donation will be appreciated and any suggestions for fund raisers considered. We do plan to recognize larger donors with signage at the facility and will be developing our system of doing this as the program develops.

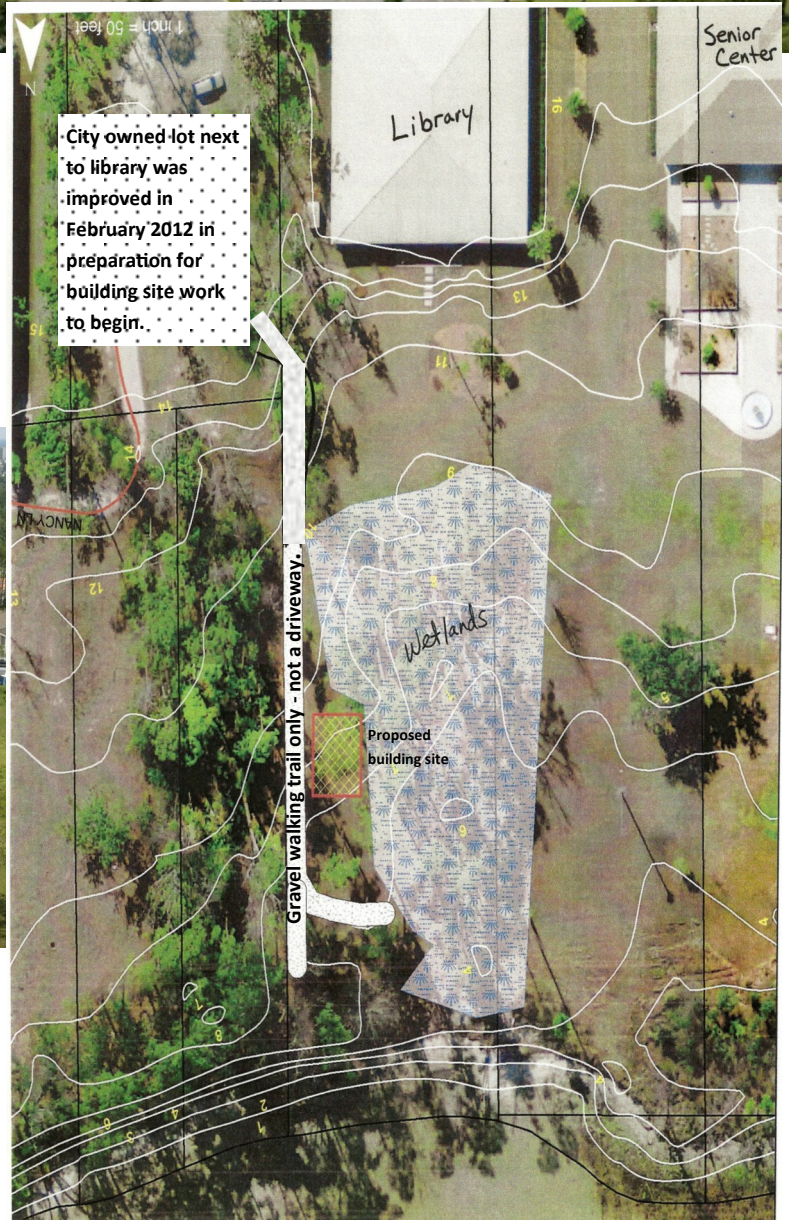
Thank you for your time in reading this information. We welcome all suggestions and look forward to continuing to grow Sail Camp!

Sincerely,

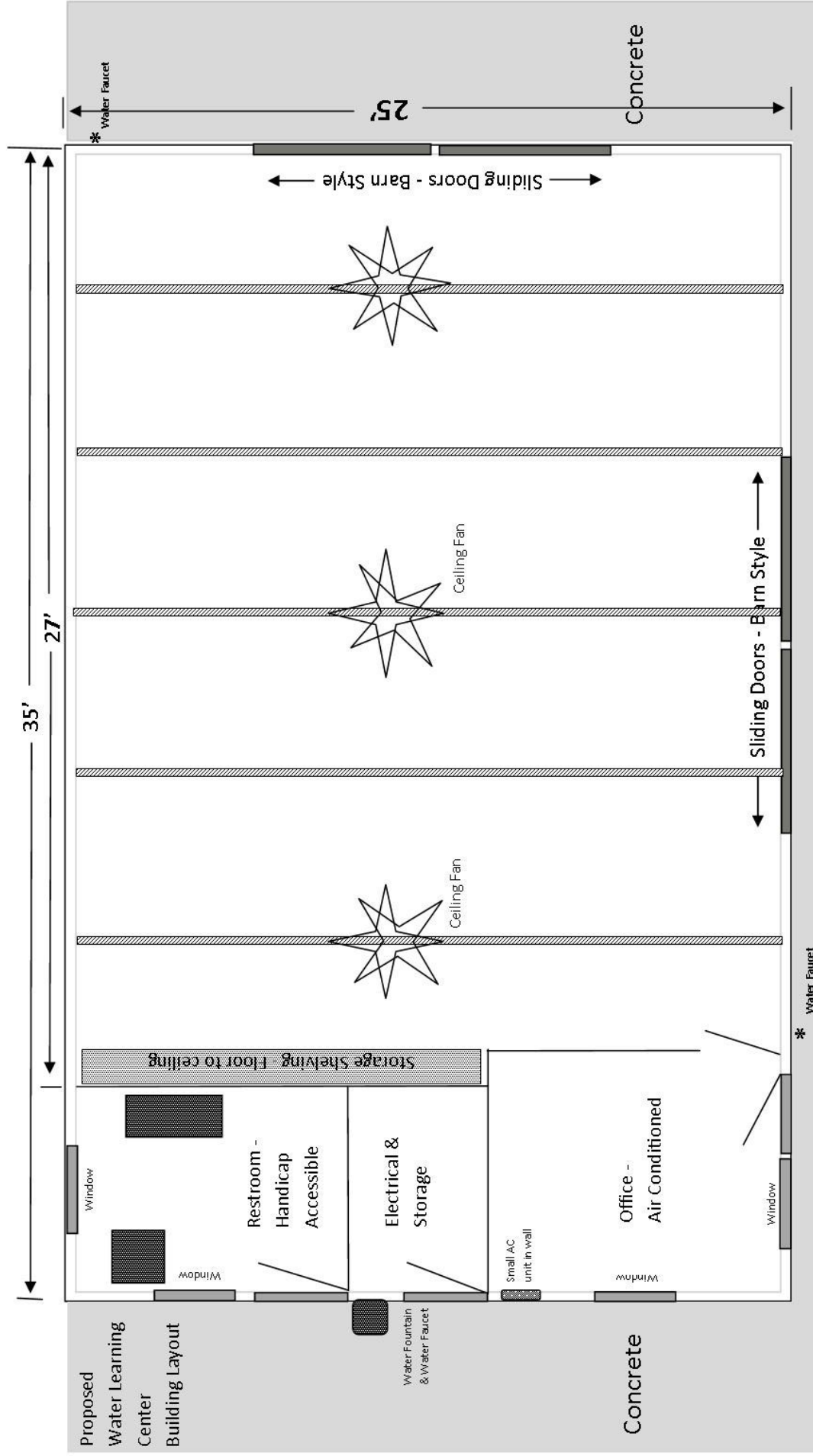
Jeanne Fitzgibbons, Office Manager & Sail Camp Coordinator
Orange Beach Parks & Recreation
251-981-1524



Orange Beach Parks & Recreation Wind & Water Learning Center for Sail Camp & Other Water Programs



Elevation and wetland areas determined by
Orange Beach Community Development Department.



Exterior and roof will be patterned after two of the buildings on the Back Country Trail. Pictured below - Picnic Pavilion



Concrete

Using similar materials and design will create continuity of the types of structures built on city park properties. Pictured below - Restrooms



Heavy beams overhead will be strong enough to hoist boats up off floor when not in use for camp programs. Height from floor to bottom of beams will be at least 10' to allow plenty of clearance when boats are hoisted up. Ceiling fans, open rafters and vented areas will help draw air into building through open sliding doors while camps are in session during warmest months.

Sponsor Recognition -

All levels of sponsorship are currently being recognized at the Sail Camp site so that parents can see the sponsor names as their children are participating in this summer's Sail Camp. After the building is completed, a sign similar to the one below will be erected next to the facility. Everyone approaching the building will see the businesses and individuals who made the Wind & Water Learning Center possible.





Donations to the City for this project are tax deductible.

'Raising The Sail'

Wind & Water Learning Center Fund Raising Program

In recognition of all sponsors & promoters, signage will be incorporated into the property plan to recognize contributions.

Sponsorship Levels -

Flagship Sponsor \$5,000

(Individual signage permanently erected on property, can include logo & words; name/business name placed on one of sailboats; sponsorship recognized on 2012 & 2013 Sail Camp t-shirts; promotional information provided to Sail Camp participants for two years.)

Signage to read -

Headsail Sponsor \$1,500

(Individual signage permanently erected on property, can include logo & words; sponsorship recognized on 2012 or 2013 Sail Camp t-shirts; promotional information provided to Sail Camp participants for one year.

Signage to read -

Spinnaker Sponsor \$500

(Individual signage permanently erected on property, can include logo & words. Business can supply information, coupons or discounts to be given to Sail Camp participants.

Signage to read -

Friend of Sail Camp \$200

(Participation acknowledged on combined sponsor plaque. Personal message can be included. Less than 70 characters.

Your Message -

Sponsor Information -

Business/Organization _____

Please list as name should appear on printed materials

Contact Person _____ Email _____

Address _____

Telephone _____

Sponsorship Level _____ Other contribution _____

Payment method - Cash _____ Check # _____

Want to give and don't have all the money right now? Pledges & Commitments will also be accepted. Please contact Jeanne to discuss your payment terms and specific situation. Every dollar counts!

For more information please contact Jeanne Fitzgibbons, 251-981-1524, jfitz@cityoforangebeach.com

**Make checks payable to -
City of Orange Beach**

Return completed form to -

**City of Orange Beach
Parks & Recreation Department
P.O. Box 458
Orange Beach, AL 36561
Fax - 251-981-6053**